

AIRSPACE OBSTACLE TABLE						
NO.	OBJECT TYPE	OBJECT HEIGHT	ABOVE GROUND LEVEL (AGL)	EXISTING DEPARTURE SURFACE ELEVATION	EXISTING DEPARTURE SURFACE PENETRATION	DISPOSITION
11	TREE	17.89'	7892.32'	7892.59'	9.63'	RUNWAY 6 DEPARTURE TO BE LIT/REMOVED*
21	TREE	15.66'	7889.43'	7884.54'	4.89'	RUNWAY 6 DEPARTURE TO BE LIT/REMOVED*
24	TREE	30.82'	7741.92'	7729.12'	12.80'	RUNWAY 6 DEPARTURE TO BE LIT/REMOVED*
25	TREE	23.54'	7737.12'	7733.30'	3.82'	RUNWAY 6 DEPARTURE TO BE LIT/REMOVED*
90	TREE	21.01'	7883.85'	7934.45'	49.40'	RUNWAY 6 DEPARTURE TO BE LIT/REMOVED*
108	GROUND	0.00'	8006.65'	7930.25'	76.40'	RUNWAY 6 DEPARTURE TO BE LIT/REMOVED*
109	GROUND	0.00'	8004.32'	7932.73'	71.64'	RUNWAY 6 DEPARTURE TO BE LIT/REMOVED*
110	GROUND	0.00'	8001.18'	7930.95'	70.23'	RUNWAY 6 DEPARTURE TO BE LIT/REMOVED*
111	GROUND	0.00'	7995.71'	7928.34'	67.37'	RUNWAY 6 DEPARTURE TO BE LIT/REMOVED*
112	GROUND	0.00'	7985.22'	7932.10'	53.12'	RUNWAY 6 DEPARTURE TO BE LIT/REMOVED*
113	GROUND	0.00'	7983.43'	7929.29'	64.11'	RUNWAY 6 DEPARTURE TO BE LIT/REMOVED*
114	GROUND	0.00'	7990.24'	7927.68'	62.56'	RUNWAY 6 DEPARTURE TO BE LIT/REMOVED*
115	GROUND	0.00'	7972.46'	7925.84'	46.61'	RUNWAY 6 DEPARTURE TO BE LIT/REMOVED*
116	GROUND	0.00'	7966.07'	7925.20'	40.87'	RUNWAY 6 DEPARTURE TO BE LIT/REMOVED*
117	GROUND	0.00'	7977.47'	7926.70'	50.77'	RUNWAY 6 DEPARTURE TO BE LIT/REMOVED*
118	GROUND	0.00'	7976.56'	7928.46'	48.10'	RUNWAY 6 DEPARTURE TO BE LIT/REMOVED*
325	AIRPORT ACCESS RD	15.00'	7679.91'	7684.35'	-4.74'	RUNWAY 6 DEPARTURE TO BE LIT/REMOVED*
326	PRIMARY ROAD	15.00'	7693.39'	7693.02'	10.33'	RUNWAY 6 DEPARTURE TO BE LIT/REMOVED*
327	PRIMARY ROAD	15.00'	7895.26'	7697.35'	-2.10'	RUNWAY 6 DEPARTURE TO BE LIT/REMOVED*
328	AIRPORT ACCESS RD	15.00'	7879.59'	7680.88'	-1.32'	RUNWAY 6 DEPARTURE TO BE LIT/REMOVED*
329	BUILDING	21.32'	7838.19'	7881.89'	-43.67'	RUNWAY 6 DEPARTURE TO BE LIT/REMOVED*
358	BUSH	3.43'	7895.12'	7925.67'	-30.55'	RUNWAY 6 DEPARTURE TO BE LIT/REMOVED*
359	BUSH	3.15'	7841.77'	7860.59'	-48.82'	RUNWAY 6 DEPARTURE TO BE LIT/REMOVED*
389	POLE	38.54'	7860.09'	7832.30'	17.79'	RUNWAY 6 DEPARTURE TO BE LIT/REMOVED*

DEPARTURE ROAD INTERSECTION TABLE						
NO.	OBJECT TYPE	OBJECT HEIGHT	ABOVE GROUND LEVEL (AGL)	EXISTING DEPARTURE SURFACE ELEVATION	EXISTING DEPARTURE SURFACE PENETRATION	DISPOSITION
5008	PUBLIC ROAD (+15' ADJUSTMENT ADDED)	15.00'	7696.00'	7696.69'	0.31'	RUNWAY 24 DEPARTURE TO BE LIT/REMOVED*
5009	PUBLIC ROAD (+15' ADJUSTMENT ADDED)	15.00'	7698.00'	7727.32'	-29.32'	RUNWAY 24 DEPARTURE TO BE LIT/REMOVED*
5010	PUBLIC ROAD (+15' ADJUSTMENT ADDED)	15.00'	7705.00'	7744.89'	-39.89'	RUNWAY 24 DEPARTURE TO BE LIT/REMOVED*
5011	PUBLIC ROAD (+15' ADJUSTMENT ADDED)	15.00'	7728.00'	7830.77'	-102.77'	RUNWAY 24 DEPARTURE TO BE LIT/REMOVED*
5012	PUBLIC ROAD (+15' ADJUSTMENT ADDED)	15.00'	7749.00'	7886.36'	-137.36'	RUNWAY 24 DEPARTURE TO BE LIT/REMOVED*
5057	PUBLIC ROAD (+15' ADJUSTMENT ADDED)	15.00'	7915.00'	7934.59'	-19.59'	RUNWAY 24 DEPARTURE TO BE LIT/REMOVED*
5058	PUBLIC ROAD (+15' ADJUSTMENT ADDED)	15.00'	7960.00'	7934.59'	-74.59'	RUNWAY 24 DEPARTURE TO BE LIT/REMOVED*
5059	PUBLIC ROAD (+15' ADJUSTMENT ADDED)	15.00'	7840.00'	7934.59'	-94.59'	RUNWAY 24 DEPARTURE TO BE LIT/REMOVED*
5060	PUBLIC ROAD (+15' ADJUSTMENT ADDED)	15.00'	7830.00'	7934.59'	-104.59'	RUNWAY 24 DEPARTURE TO BE LIT/REMOVED*
5061	PUBLIC ROAD (+15' ADJUSTMENT ADDED)	15.00'	7789.00'	7934.59'	-165.59'	RUNWAY 24 DEPARTURE TO BE LIT/REMOVED*
5062	PUBLIC ROAD (+15' ADJUSTMENT ADDED)	15.00'	7747.00'	7934.59'	-187.59'	RUNWAY 24 DEPARTURE TO BE LIT/REMOVED*
5103	PUBLIC ROAD (+15' ADJUSTMENT ADDED)	15.00'	7711.00'	7738.27'	-25.27'	RUNWAY 24 DEPARTURE TO BE LIT/REMOVED*
5104	PUBLIC ROAD (+15' ADJUSTMENT ADDED)	15.00'	7950.00'	7841.41'	8.59'	RUNWAY 24 DEPARTURE TO BE LIT/REMOVED*
5105	PUBLIC ROAD (+15' ADJUSTMENT ADDED)	15.00'	7829.00'	7889.72'	-40.72'	RUNWAY 24 DEPARTURE TO BE LIT/REMOVED*

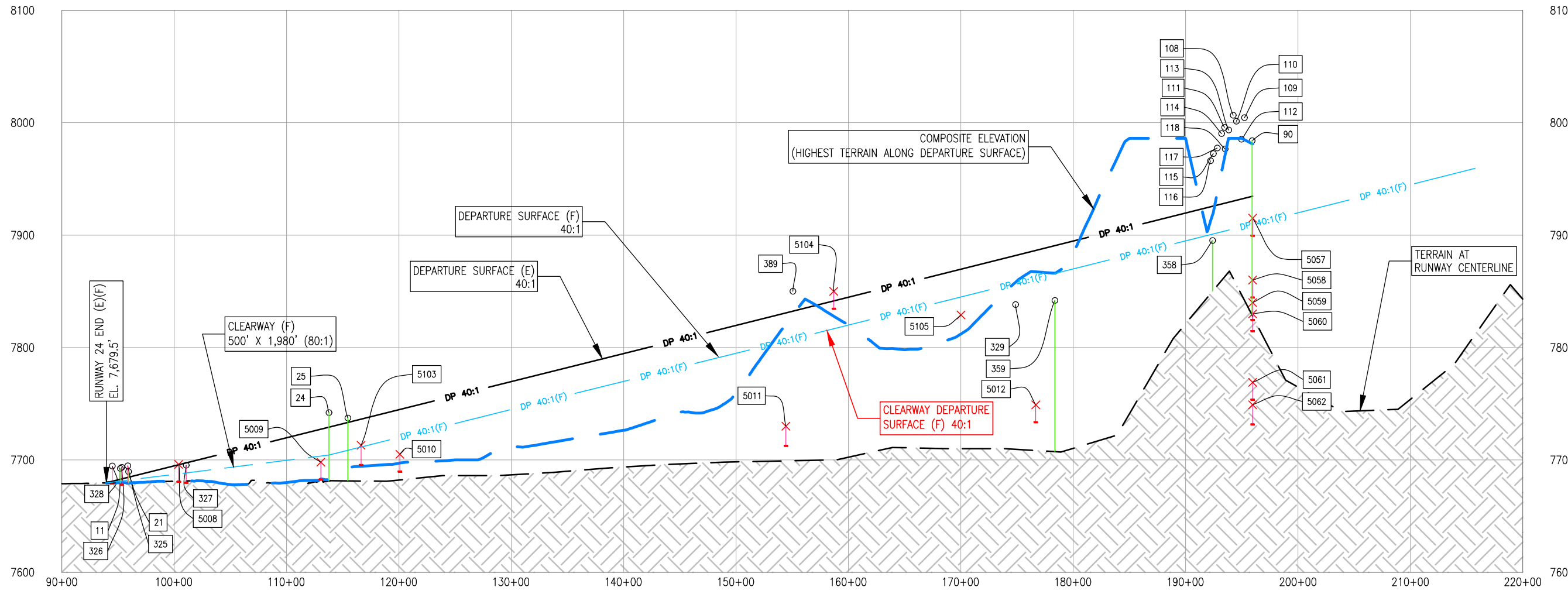
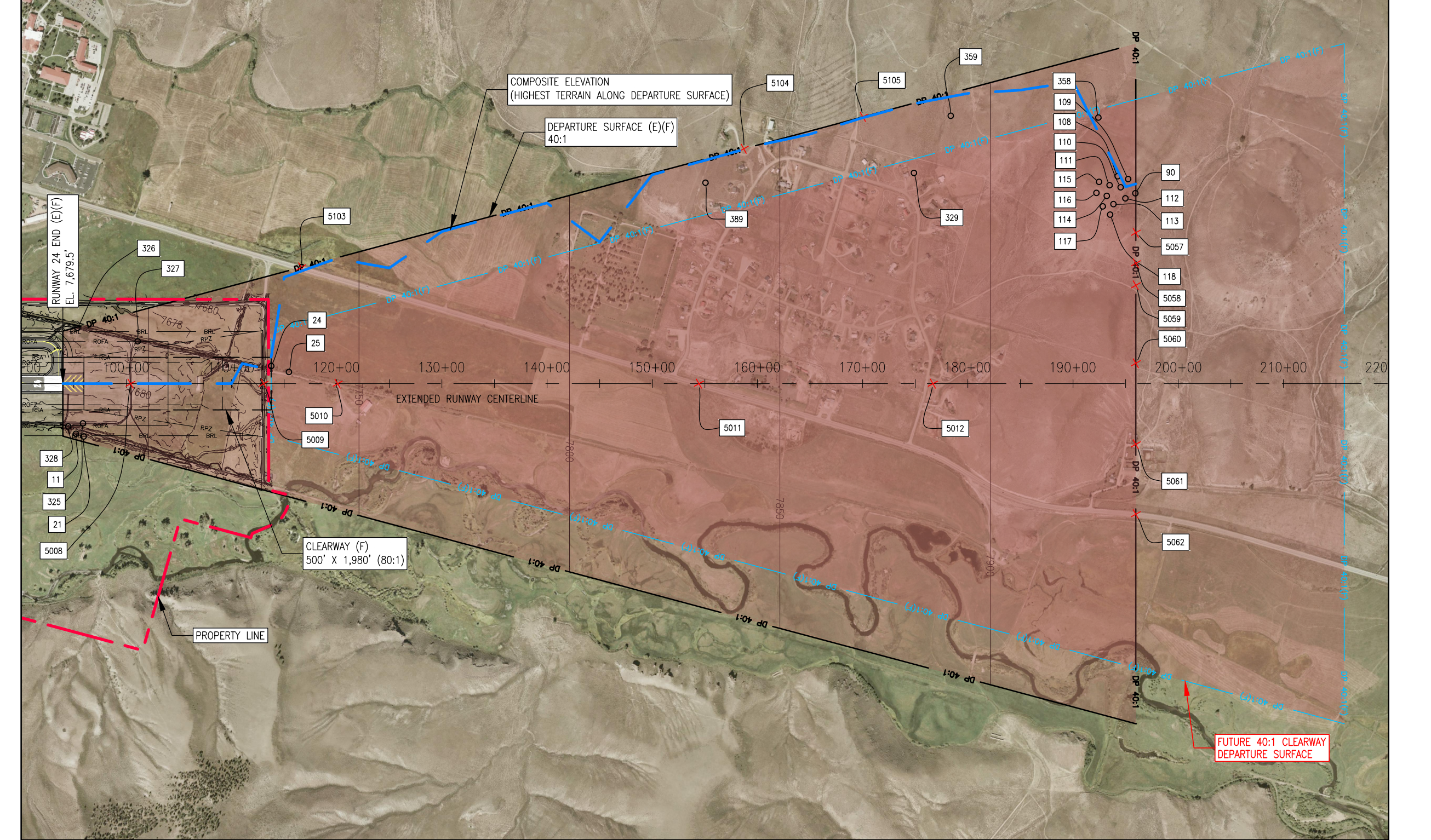
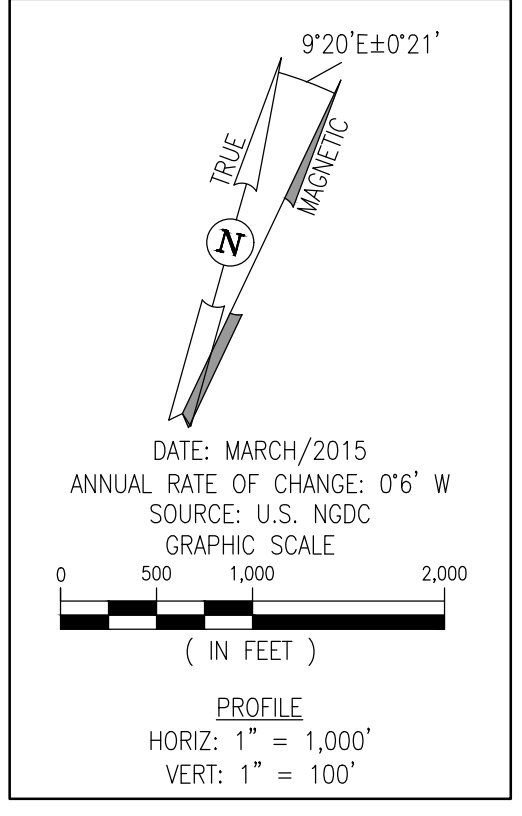
*FINAL DETERMINATION PENDING FAA AERONAUTICAL STUDY

NOTES

- SERVICE ROADS PROVIDE ACCESS TO THE AIRPORT'S NAVIGATIONAL AIDS. ACCESS TO THESE ROADS IS CONTROLLED.
- EXISTING AND FUTURE CONDITIONS ARE SHOWN AS (E)(F).

SOURCE

- THIS SITE PLAN LINE WORK AND AERIAL IMAGE IS BASED ON THE PLANIMETRIC MAPPING & ORTHO-IMAGERY INFORMATION COMPILED BY WOOLPERT, INC. IN 2014.
- OBSTRUCTION SURVEY DATA WAS COMPILED BY WOOLPERT, INC. IN 2014.
- ALL HORIZONTAL COORDINATES - NAD83/2011, ALL VERTICAL COORDINATES - NAVD88



I:\Projects\GUC\CD\MAP-2015\PLANS
 15-17-00C-11P-R020-RUNW-4-24.dwg
 May 18, 2016 - 7:53am
 cberic@



DES: R.L.B.	ISSUE RECORD			
	NO.	BY	DATE	DESCRIPTION
DR: R.L.B.	1	S.V.B.	11/17/16	FINAL
CH: S.V.B.				
APP: S.V.B.				

THE PREPARATION OF THIS DOCUMENT MAY HAVE BEEN SUPPORTED, IN PART, THROUGH THE AIRPORT IMPROVEMENT PROGRAM FINANCIAL ASSISTANCE FROM THE FEDERAL AVIATION ADMINISTRATION AS PROVIDED UNDER TITLE 49 U.S.C. SECTION 47104. THE CONTENTS DO NOT NECESSARILY REFLECT THE OFFICIAL VIEWS OR POLICY OF THE FAA. ACCEPTANCE OF THIS AIRPORT LAYOUT PLAN BY THE FAA DOES NOT IN ANY WAY CONSTITUTE A COMMITMENT ON THE PART OF THE UNITED STATES TO PARTICIPATE IN ANY DEVELOPMENT DEPICTED THEREIN NOR DOES IT INDICATE THAT THE PROPOSED DEVELOPMENT IS ENVIRONMENTALLY ACCEPTABLE OR WOULD HAVE JUSTIFICATION IN ACCORDANCE WITH APPROPRIATE PUBLIC LAWS.

AIRPORT LAYOUT PLAN

RUNWAY DEPARTURE SURFACE DRAWING - RUNWAY 24

AIP PROJ. NO. 3-08-0030-048
 JVIATION PROJ. NO. 2014.GUC.03
 DATE: NOVEMBER, 2016

SHEET NO. 17 of 19